

Stromness Golf Course

The 'Sooth End' with the Hoy Hills



Keep a look out for the blue plaques. There are 15 to find and they mark points of historical interest.

Points of interest:

- 1 Point of Ness
- 2 Stromness Golf Club
- 3 George Mackay Brown Memorial Garden
- 4 The Canon
- 5 Login's Well
- 6 George Mackay Brown's former home
- 7 Stromness Museum
- 8 Pole Star Pier
- 9 Former Lifeboat Shed
- 10 Stromness Town Hall
- 11 Community Centre
- 12 The Pier Arts Centre
- 13 John Rae Memorial
- 14 Library/Archive/Police Station
- 15 Visitor Information and Bus Terminal
- 16 Medical Centre
- 17 Supermarket
- + Chemist/Pharmacy
- † Church
- P Parking
- T Toilets
- £ Cash Point
- Main Retail Area

Hoy Sound/Nethertown (circular) 3.2m - 5.21km
 One of the most popular walks in Orkney through the picturesque streets of Stromness around the Point of Ness with views across Hoy Sound to the islands of Graemsay and Hoy. The hill on Hoy to your left (Ward Hill) at 479ft (146m) is the highest in Orkney. Seabirds are always present around the coast and the gentle climb back into town offers great views out over the town and Scapa Flow.

Stromness Main Street (return) 2.1m - 3.5km
 An easy stroll along the main street in Stromness which takes in most of the shops and points of interest Stromness has to offer. Keep an eye out for the plaques marking points of interest. You may be surprised to know the street is open to two way traffic! The many narrow lanes and alleyways leading off the main street are worth exploring also.

Downie's Lane viewpoint (circular) 1.9m - 3.07km
 A great walk for those willing to climb a bit (70m to viewpoint). The views from the top are worth it though, looking north out over the West Mainland of Orkney and south over the town to the south isles and Scapa Flow.

Copland's Dock (return) 2.24m - 3.62km
 An easy coastal walk around Hamnavoe bay to the new pier of Copland's Dock. Good views back towards the town and the Holms of Stromness. The new pier was constructed to support the emerging renewables industry. Crab fishing boats also land their catches here for the Orkney Fishermen's Society crab processing plant (the biggest in Europe).



4 popular walks around the town of Stromness

- Hoy Sound/Nethertown** (circular) 3.2m - 5.21km
- Stromness Main Street** (return) 2.1m - 3.5km
- Downie's Lane viewpoint** (circular) 1.9m - 3.07km
- Copland's Dock** (return) 2.24m - 3.62km



14 Stromness Library offers a wide range of fiction and non-fiction titles as well as audio books, music CDs and a bright, well stocked children's section. It also has a reference collection, housed in the George Mackay Brown Room. In the main library you will find an up-to-date selection of local and national newspapers and magazines which you can enjoy in our foyer seating area, or upstairs on our comfy sofas, which offer a fantastic view over Stromness harbour.

t: +44(0)1856 850907
w: orkneylibrary.org.uk



Stromness Library

free entry

Some of Stromness' Main Attractions (see map overleaf):

15 Visitor Information and Bus Terminal brochure and leaflet information everything you need to know about Orkney from travel and accommodation to sites of interest, nature and environment and much more. Busses arrive/depart from here and the NorthLink ferry to Mainland Scotland departs here also.

12 The Pier Arts Centre was established in 1979 to provide a home for an important collection of British fine art. As well as hosting a range of exhibitions throughout the year the permanent collection includes works by major 20th Century artists Barbara Hepworth, Ben Nicholson and Alfred Wallis and others.

t: +44(0)1856 850209 **w:** pierartscentre.com

7 Stromness Museum is crammed full of fascinating historic detail, telling the stories of Orcadians at home and abroad. These include unique displays about the life and work of the explorer Dr John Rae and an amazing array of objects recovered from the German High Seas Fleet after it was scuttled in Scapa Flow. The Museum was founded by the Orkney Natural History Society in 1837, and still houses the most extensive natural history collection in the islands, featuring rocks, shells, birds and sealife.

t: +44(0)1856 850025
w: stromnessmuseum.org.uk



Stromness Museum

The long street wends its way along the shore, with steep steps leading up the hill towards the larger houses, built above the town by wealthy merchants and sea captains in the 19th and early 20th centuries. Later, council schemes and private dwellings have filled the gaps on the hillside above the old town.

The first recorded development on the shore of Hamnavoe was in the year 1595, when William and Marion Clark opened an inn at the north eastern corner of the bay. The inn was built in response to the increasing number of Northern European vessels - explorers and merchants - heading for the Atlantic to develop trade with America and the Far East.



Stromness waterfront

The 18th century brought great prosperity to the town, with many local people setting up businesses to supply the ships and their crews. A whaling boom and later a hectic, though short-lived, herring fishery also attracted hundreds of seasonal workers from elsewhere in Orkney and beyond to work with the 'silver darlings'.



The First and Second World Wars brought another huge influx of people, this time of servicemen and women. The command Centre for the British Home Fleet was based in Stromness.

Each period of history has left its mark and has helped to shape the town you see today. These days the fishing is mainly for brown crab and lobster and the harbour is busy with dive charter boats and vessels serving the marine renewables industry.

www.stromnessorkney.com

Travelling out of Town

The gently **rolling landscape** of Orkney has been a crossroads and **safe haven** for travellers for many thousands of years. Here you will find some of the most important archeological sites in Europe - **Skara Brae, Ring of Brodgar, Standing Stones of Stenness, Maeshowe** and the newly discovered 'Neolithic Temple' at the Ness of Brodgar - to name but a few.

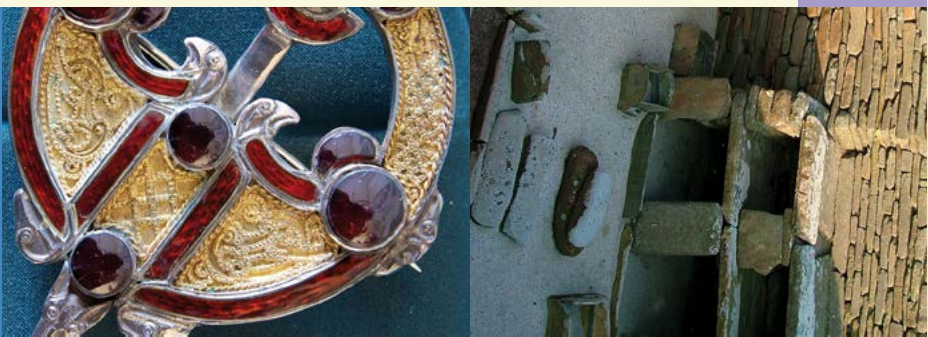
Nature and the **elements** dictate the pace of life here. Summer brings a flush of green to the **fertile fields** and the **clear waters** which sweep through the 70 or so islands **teen with life**.

It is this attractive landscape and **natural bounty** that brought settlers here thousands of years ago and continues to see over 200,000 visitors **returning to our shores** each year.

Take a little time to discover why our islands are **so special**; you can be sure that a **warm welcome** awaits you.

The chart below gives **distances from Stromness** to help you plan **your own visit** to some of the bigger attractions.

| Destination | From Stromness |
|-----------------------------|----------------|
| Finstown | 7.5m 12km |
| Maeshowe | 4.7m 7.5km |
| Standing Stones of Stenness | 4.8m 7.7km |
| Ring of Brodgar | 5.8m 9.3km |
| Skara Brae & Skallil House | 7.4m 12km |
| Brough of Birsay | 14.1m 22.7km |
| Kirbuster Farm Museum | 11.5m 18.5km |
| Broch of Gurness | 17.1m 27.5km |
| Churchill Barriers | 22m 35.4km |
| Italian Chapel | 22.5m 36.2km |
| Orkney Fossil Centre | 25m 40.2km |
| St Margaret's Hope | 29m 46.7km |



Ashore in

STROMNESS

Stromness lies in the west of Orkney, huddled around the sheltered bay of Hamnavoe. The town owes its existence to this natural harbour and its history reflects changes in maritime life over the centuries.

Arriving by sea, the entrance lies between the Holms and the Point of Ness. A dramatic setting - the buildings crowd around the harbour, creeping upwards towards the ridge of Brinkie's Brae.



Ring of Brodgar